



# Valves

Handling the world's dry bulk solids®

## VORTEX® ROLLER GATE™

The Vortex® Roller Gate™ offers quality features at an economical price. This gate is the best choice for handling dry material in gravity flow applications where positive material shut-off and dust tight sealing are required in compact locations. The Vortex® Roller Gate™ is available in a wide variety of configurations to meet customer requirements, including rectangular sizes and customer specific hole patterns.

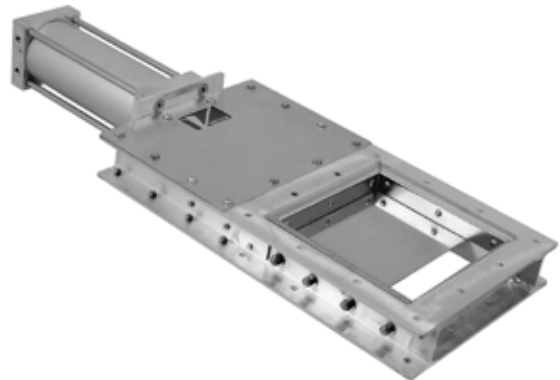
### Vortex® Roller Gate™ Features

- Narrow Profile
- Positive Seal of Dust and Fine Powders
- Seals and Cam Adjustable Nylon Rollers Protected from Abrasion
- Accurate Metering of Material with Optional Metering Controls
- Seal Access Ports for In-Line Seal Replacement
- Air Cylinder Model Includes Magnetic Piston



### Valve Specifications

<b>Size/Bore Options</b>	150mm to 750mm and larger in Square or Rectangular sizes
<b>Media</b>	Powder, Pellets, Granulars
<b>Connection Options</b>	SVC Flange, CEMA Flange, and/or Custom Flanges
<b>Media Temperature</b>	Up to 82°C continuous to 121°C intermittent service, Modifications allow up to 204°C continuous to 232°C intermittent service
<b>Media Pressure</b>	0 barg, Gravity Flow Only
<b>Metal Construction Options</b>	Aluminium, 304 or 316L Stainless Steel, and Carbon Steel. Material contact is 304 or 316L Stainless Steel
<b>Seal/Seat Material Options</b>	Nylon, PET, UHMW, Glass Filled Teflon, Natural Rubber, and/or Silicon Rubber
<b>Drive/Actuation Options</b>	Double Acting Air Cylinder and Solenoid Operated Air Control Valve, Electric Actuator, Hydraulic Actuator, Hand Crank, or Chain Wheel
<b>Position Confirmation</b>	Magnetic Reed, Proximity, or Mechanical Limit Switches
<b>Compliance/Approvals</b>	CE, ATEX, FDA
<b>Industry Use</b>	Plastics, Petrochemicals, Chemicals, Foods, Minerals, Textiles, Agriculture

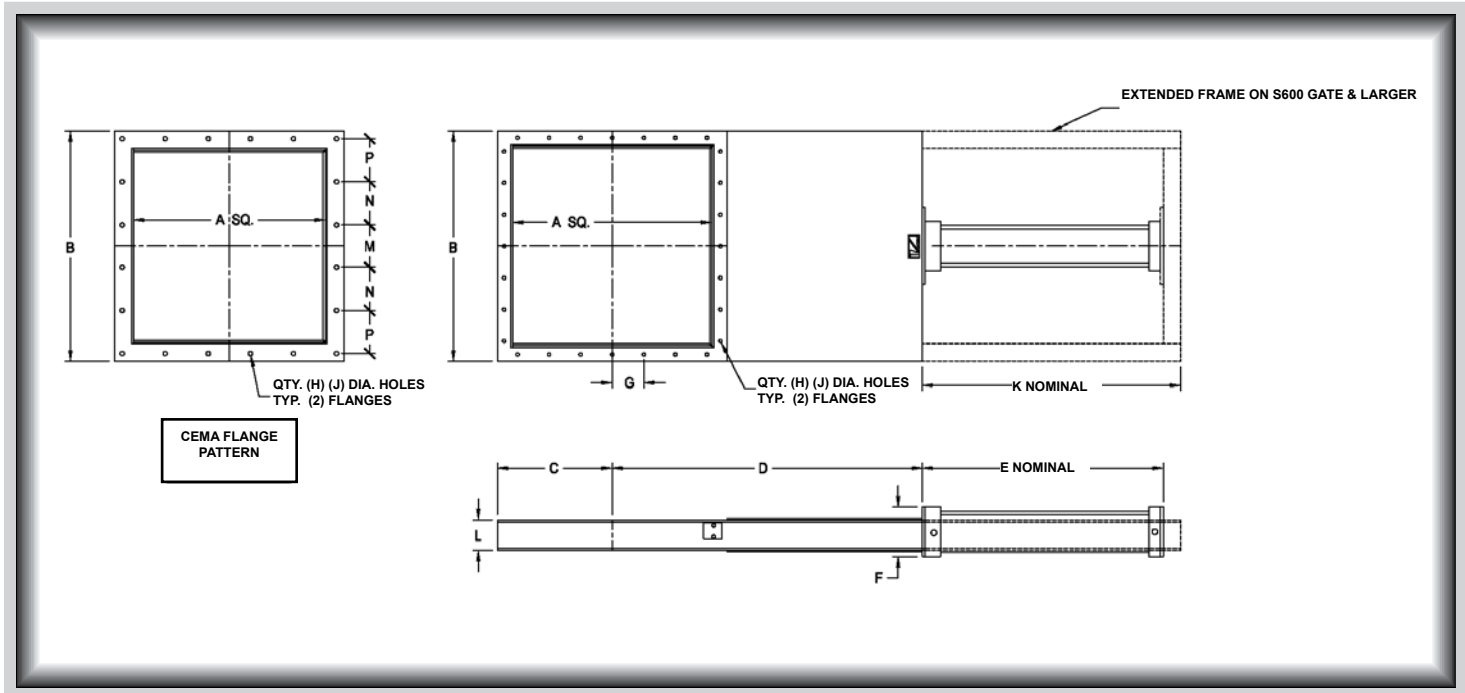


### Application Specific Modifications

<b>S</b>	Material contact is 316L stainless steel.
<b>HS</b>	Hardened steel cam rollers replace standard nylon cam rollers.
<b>HT3</b>	Modifications are made allowing 121°C continuous to 149°C intermittent service.
<b>HT4</b>	Modifications are made allowing up to 204°C continuous to 232°C intermittent service.
<b>WS1</b>	Slide blade is electro-polished. Polyethylene Terephthalate (PET) dust seals are used to replace nylon.
<b>SB</b>	Bonnet is manufactured with solid covers and has a gasket. (Allows the valve to accept air purge.)



## VORTEX® ROLLER GATE™ DIMENSIONAL INFORMATION



Model	A	B	C	D	E	F	G	H	J	K	L	WT (kg)
S150	152	254	127	305	279	114	105	8	11	--	76	14
S200	203	305	152	381	330	114	89	12	11	--	76	17
S250	254	356	178	457	381	114	114	12	11	--	76	20
S300	305	406	203	533	432	114	70	20	11	--	76	22
S350	356	457	229	610	483	114	83	20	11	--	76	27
S400	406	508	254	686	533	140	95	20	11	--	76	34
S450	457	559	330	762	584	140	108	20	11	--	76	38
S500	508	610	305	838	635	140	76	28	11	--	76	45
S550	559	660	406	914	686	140	89	28	11	--	76	63
S600	610	737	368	991	--	140	95	28	11	813	102	77
S750	762	889	445	1220	--	140	92	36	11	959	102	91

Model	A	Conveyor Diameter	B	C	D	E	F	G	H	J	K	L	M	N	P	WT (kg)
S175	178	152	279	140	343	305	114	--	12	11	--	76	76	--	71	17
S255	254	229	356	178	457	381	114	--	12	11	--	76	102	--	102	20
S275	279	254	381	191	495	406	114	--	12	11	--	76	111	--	110	21
S325	330	305	432	216	572	457	114	--	12	11	--	76	133	--	130	23
S375	381	356	483	241	648	508	114	--	20	11	--	76	89	89	89	29
S425	432	406	533	267	724	559	140	--	20	11	--	76	102	102	95	38
S475	483	457	584	292	800	610	140	--	20	14	--	76	111	111	113	43
S525	533	508	635	318	876	660	140	--	20	14	--	76	121	121	124	48
S625	635	610	762	381	103	--	140	--	20	14	832	102	140	143	143	84

All dimensions are in mm, information subject to change without notice.

©2010 Salina Vortex® Corporation PCA4-0310