



VORTEX® QUANTUM® SERIES 3-WAY WYE LINE DIVERTER™

The patented Vortex® Quantum® Series 3-Way Wye Line Diverter™ is specifically engineered to handle dry bulk solids in vacuum or dilute phase pneumatic conveying systems with pressures up to 15 psig (1 barg). A full flow orifice provides unrestricted conveying of material with no disk or ledges to impede flow. The diverter seat and live-loaded seals are shielded from abrasion by a metal insert, which provides superior shearing action. The Wye Line Diverter™ is designed to eliminate problems, increasing production, while decreasing labour and equipment costs.

Vortex® Quantum® Series 3-Way Wye Line Diverter™ Features

- Ability to Shift without Shutting Down Blower
- Improves Conveying Efficiency
- Smooth, Unobstructed Bore for Unrestricted Flow of Material
- Seal Protected from Abrasion
- Easy Installation and Maintenance
- Air Cylinder Model Includes Magnetic Piston



Valve Specifications	
Size/Bore Options	50mm to 150mm Diameters, Pipe or Tube
Media	Powder, Pellets, Granulars
Connection Options	Compression Coupling
Media Temperature	Up to 82°C continuous to 121°C intermittent service, Modifications allow up to 204°C continuous to 232°C intermittent service
Media Pressure	-0.1 MPa +0.1 MPa, 1 barg, 15 psig, depending on size
Metal Construction Options	304 or 316L Stainless Steel, Aluminium, and/or Carbon Steel
Seal/Seat Material Options	Nylon, PET, UHMW, Glass Filled Teflon, Natural Rubber, and/or Silicon Rubber
Drive/Actuation Options	Double Acting Air Cylinder and Solenoid Operated Air Control Valve
Position Confirmation	Magnetic Reed Switch or Proximity Switch
Compliance/Approvals	CE, ATEX, FDA
Industry Use	Plastics, Petrochemicals, Chemicals, Foods, Minerals, Textiles, Agriculture



Patent No. 7464913

Application Specific Modifications

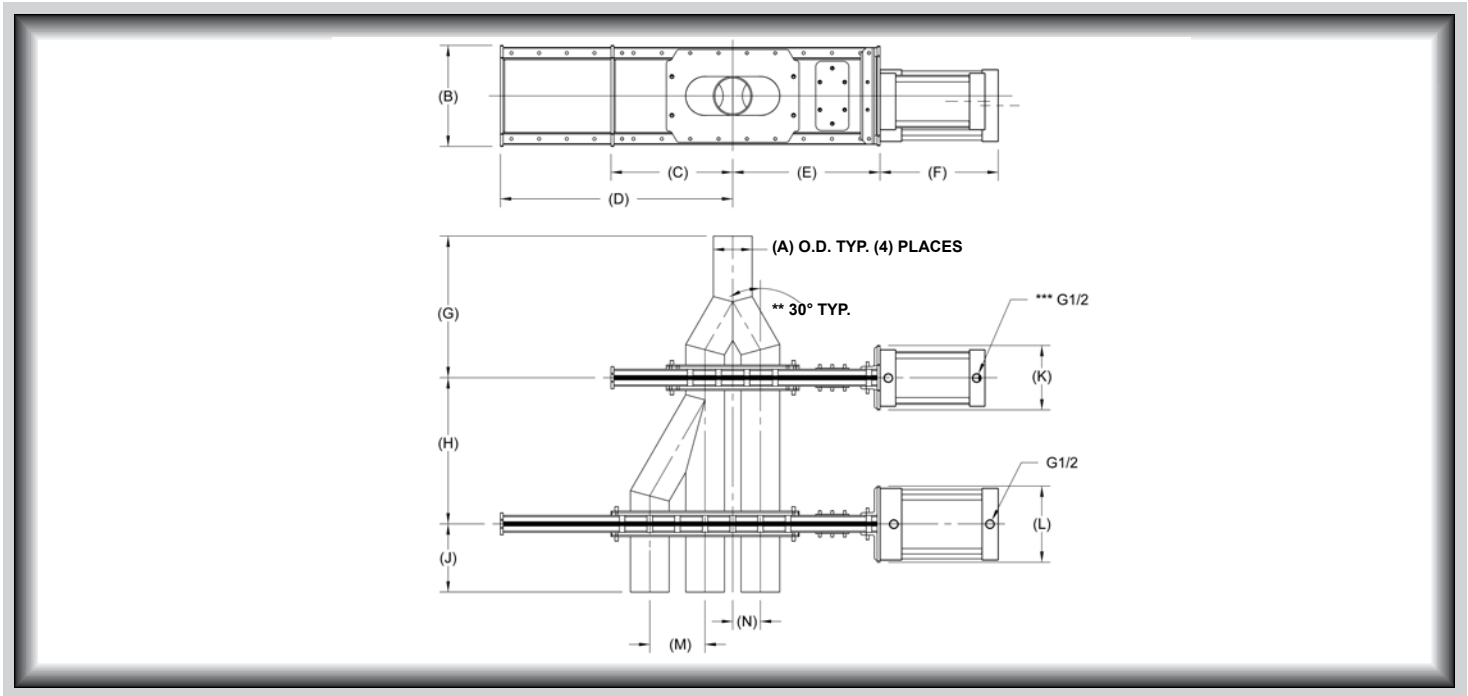
S	Material contact is 316L stainless steel.
HT3	Modifications are made allowing 121°C continuous to 149°C intermittent service.
HT4	Modifications are made allowing 204°C continuous to 232°C intermittent service.
P10	Diverter are made with Schedule 10 Pipe.
P40	Diverter are made with Schedule 40 Pipe.
WS1	Slide blade is electro-polished. Polyethylene Terephthalate (PET) pressure plate seals replace Nylon.



Valves

Handling the world's dry bulk solids®

VORTEX® 3-WAY WYE LINE DIVERTER™ DIMENSIONAL INFORMATION



Tube Model	A	B	C	D	E	F	G	H	J	K	L	M	N
DR50-3(XX)	51	181	165	292	210	176	185	205	106	121	121	64	32
DR65-3(XX)	64	206	216	394	278	203	220	256	106	122	146	89	44
DR75-3(XX)	76	206	216	394	278	203	220	256	106	122	146	89	44
DR100-3(XX)	102	232	279	533	338	272	264	335	106	148	175	127	64
DR125-3(XX)	127	257	330	640	394	297	321	395	131	152	173	152	76
DR150-3(XX)	152	283	381	741	443	322	353	465	131	156	178	178	89

Pipe Model	A	B	C	D	E	F	G	H	J	K	L	M	N
DR50-3(XX)-P*	60	206	216	394	278	203	258	256	131	122	146	89	44
DR65-3(XX)-P*	73	206	216	394	278	203	258	256	131	122	146	89	44
DR75-3(XX)-P*	89	232	279	533	338	272	325	335	156	148	175	127	64
DR100-3(XX)-P*	114	257	330	640	394	297	350	395	156	152	173	152	76
DR125-3(XX)-P*	141	283	381	741	443	322	388	465	156	156	178	178	89
DR150-3(XX)-P*	168	302	527	1035	591	399	395	440	180	192	192	254	127

All dimensions are in mm, information subject to change without notice.

(XX) Material of construction, aluminum (AL), carbon steel (CS), or stainless steel (SS).

*Select pipe schedule 10 or 40.

**DR150 pipe model has 45° angle.

***DR50 tube model has G3/8.